



# ADVANCING SUSTAINABILITY PRACTICES AROUND THE WORLD



GROW  
RESPONSIBLY WITH  
ENVIRONMENTAL,  
SOCIAL, AND  
GOVERNANCE  
SOLUTIONS







# CONTENTS

ABOUT ADEC INNOVATIONS	1
ESG OVERVIEW	2
INDUSTRY EXPERTISE SOLUTIONS	3
Sustainability Planning and Management	4
Environmental Planning and Compliance	5
Disclosure	6
DATA MANAGEMENT OUTSOURCING AND BUSINESS PROCESS MANAGEMENT	8
ADEC ESG SOLUTIONS FOR IMPACT ORGANIZATIONS	9
CDP	10
CDPInsights	11
ZDHC Gateway	11
ZDHC Foundation	12
SOFTWARE SOLUTIONS	13
CleanChain	13
MetricsTrac	15
FoodChain	17
Marketplace	19
Envirobility	20

# ABOUT ADEC INNOVATIONS

Established in 1982, ADEC Innovations' environmental, social, and governance (ESG) business advances sustainability practices around the world.

## Global Experience

With a network of thousands of ADEC Innovations employees across five continents working to help organizations responsibly grow and efficiently operate, ADEC ESG Solutions seamlessly delivers fully integrated, cost-effective industry expertise, business process & data management, and software services to ensure we meet your ever-evolving ESG needs and help you improve sustainability performance, gain unprecedented insights, optimize resource use, and drive operational efficiencies.

## Empowering Better Decisions

At ADEC Innovations, we believe information should be at the forefront of decision-making and progress. We focus on identifying, consolidating, organizing, interpreting, and providing visibility into business intelligence and data, enabling your organization and stakeholders to make the most informed decisions. Our comprehensive suite of software and consulting solutions helps minimize negative social and environmental impacts, maximize efficiency, and drive long-term business growth through sustainable profitability and empowered decision making.



## VISION

Advance sustainable business practices around the world

## MISSION

Collaborate on innovative sustainability solutions to help organizations responsibly grow and operate



# Highly Satisfied Clients

**Szilard Szarvas,**  
EHS Senior Manager,  
Levi Strauss & Co. Europe

“ Levi Strauss & Co. is committed to zero discharge of hazardous chemicals throughout our supply chain and to advancing good chemical management practices in the apparel industry. We look forward to leveraging CleanChain as an effective way to improve the transparency and chemistry used in the manufacturing of our products.

**Eclat Textile Co. Ltd.**

“ CleanChain provides us with more visibility into our chemical inventory data and formulators, allowing us to better track, manage, and analyze our data and performance over time. It has saved us time and effort with our data collection and reporting, and it has had a positive impact on customer relationships, who are able to clearly and easily view and track our chemical conformance and information.

**Theresa Mathews,**  
Cavium, Inc.

“ Working with ADEC Innovations has exceeded every expectation we had. While we expected them to help us establish our initial environmental sustainability program, we did not anticipate how quickly ADEC Innovations would achieve incremental, measurable results.

## ESG OVERVIEW

The key to connecting sustainability initiatives with profitability, performance, and key business metrics is data.



ADEC Innovations' software, data management, and consulting are entirely adaptable to the needs of your organization, whether you are a business, coalition, non-profit, or government entity.



### Flexible Software Services

We provide a seamless suite of solutions that help you achieve your goals including software and data management for transparency and measuring key sustainability metrics within your organization and across your supply chain.



### ESG Professional Services

Our ESG consulting services provide the insights and guidance you need to analyze, disclose, and take action to improve your ESG strategy and performance.





# INDUSTRY EXPERTISE SOLUTIONS

---

ADEC Innovations works with clients around the world who recognize that improving transparency, driving down costs, decreasing dependency on non-renewable resources, and enhancing corporate standing begins with the implementation of a corporate-wide sustainability strategy.

ADEC ESG Solutions integrates sustainability subject matter expertise, software, and data management services into a fully customized experience. From emissions and water analysts to project managers and data experts, we pull together multidisciplinary teams to provide your organization with the knowledge and tools you need to craft a comprehensive and impactful sustainability strategy.

## ADEC Innovations empowers you to:

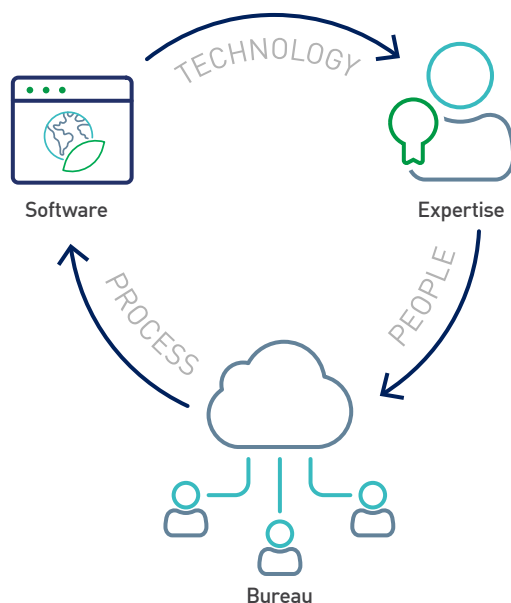
- ▶ Understand and strategically manage ESG sustainability performance
- ▶ Manage and engage your supply chain to ensure alignment with your sustainability goals
- ▶ Identify, evaluate, and manage climate change risks throughout your business
- ▶ Reduce costs and improve overall operational efficiency
- ▶ Align your ESG strategy, program, and reporting with investor and industry requirements

Our team includes experts in energy, carbon, water, forests, environmental compliance, supply chain management, corporate social responsibility (CSR), and more that help you make the most effective decisions for your business. Working in tandem with our data management colleagues, our Professional Services team will ensure that ADEC Innovations' systems and services seamlessly integrate with your existing processes to streamline your sustainability management.



# SUSTAINABILITY PLANNING AND MANAGEMENT

From facility-level data and initiatives to presenting your ESG strategy to investors and board members, our experts will help you manage, plan, and actively evolve your sustainability strategy across all aspects of business.



## ADEC Innovations helps you address:

- ▶ **Energy:** Create programs to help identify renewable opportunities, save on energy costs, and manage energy consumption
- ▶ **Carbon Emissions:** Actively manage your carbon emissions through comprehensive greenhouse (GHG) inventories, opportunities identification, and Science-Based Targets
- ▶ **Lifecycle Assessments:** Understand the full impacts of your product from cradle to grave
- ▶ **Water:** Evaluate and mitigate water risk and usage with short- and long-term water strategies and management plans
- ▶ **Social Sustainability:** Determine your social key performance indicators (KPI) and demonstrate transparency and trustworthiness through social and ethical performance management
- ▶ **Supply Chain:** Increase visibility and engagement with your supply chain using integrated data management, sustainable procurement practices, and sustainability strategy alignment
- ▶ **Sustainability Data Management and Reporting:** Streamline the collection, processing, and reporting of your ESG data to meet investor and industry requirements
- ▶ **Internal and Investor Engagement:** Proactively inform, educate, and manage expectations and requirements from the investor community and internal stakeholders on ESG topics
- ▶ **Climate-Related Risks:** Manage physical and transitional risks throughout your business using scenario planning





## ENVIRONMENTAL PLANNING AND COMPLIANCE

ADEC Innovations helps you transform initiatives into opportunities for growth and sustainability and provides comprehensive, cost-effective solutions that improve environmental performance with profitable sustainability.

### Services include:

- ▶ Environmental impact assessments and reports
- ▶ Natural resources management
- ▶ Cultural resources management
- ▶ Air quality management
- ▶ Noise management
- ▶ Due diligence and entitlements services
- ▶ Regulatory permitting

# 8,000+

successful projects  
from around the world



“Environmental planning and improvement is an overwhelming task, especially if you don’t have all the information you need in order to make the best decisions. ADEC Innovations has helped make our sustainability goals for Southern California a reality.

Grieg Asher, AICP, GHG/Sustainability Project Manager,  
Southern California Association of Governments





# DISCLOSURE

## Sustainability matters.

Increasingly, investors, customers, and other stakeholders are searching for validated and relevant data to support decision-making—and sustainability disclosures impact an organization's longevity, market perception, corporate responsibility, and bottom line value.



**ADEC Innovations has experience with major global indices and offers expertise to help you improve performance:**

- ▶ **CDP:** As CDP's Global Scoring and Outsourcing Partner from 2011-2020, ADEC Innovations has unique experience in the scoring methodology.
- ▶ **EcoVadis:** From energy to chemical management, we work with you to create strategic programs and deliver results across all 21 EcoVadis methodological criteria
- ▶ **Reporting Frameworks:** Our intimate knowledge of GRI, SASB, UN SDGs, Integrated Reporting, and more can help you streamline your data collection, analysis, and reporting to actively meet those requirements in your CSR or financial reports
- ▶ **Other reporting indices:** We offer a thorough review of your company's response and sustainability references for many other reporting indices, including GRESB, FTSE4GOOD, DJSI, ISS, MSCI, Sustainalytics, and more

“ We have worked with ADEC Innovations over multiple reporting seasons, and they have always provided us with fast, friendly, and expert service. Their precise and detailed recommendations have enabled us to maximize our CDP Climate Change and Water scores, and their insights have been invaluable in helping us better understand the methodology and given us clear direction on how to improve our response and sustainability efforts.

Cindy M. Bush, Director, Environmental Health & Safety, Tessy Plastics Corp.



## CASE STUDY



UNIBAIL-RODAMCO-WESTFIELD

### THE CHALLENGE

Multinational retail developer Unibail-Rodamco-Westfield (URW) needed comprehensive professional services to lead and enhance its strategic ESG initiatives, including environmental data management and sustainability reporting. ADEC Innovations' ESG multidisciplinary team stepped in to streamline data management and bring expertise to various reporting indices.

### THE SOLUTION

Integrating sustainability and data management with MetricsTrac™, our team combined more than 20 data streams with 90 unique data points from 50 locations within the former Westfield US and UK footprint, freeing up internal URW resources. We worked hand-in-hand with URW staff to develop structured responses to CDP, GRESB, and FTSE4Good, resulting in increased scores across the board. This solid foundation of accurate and auditable data provided the basis for URW's CSR report, including GHG emissions and mitigation project components. We provided responsive support throughout, from data to sustainability disclosure management, and served as an extension of the URW team in developing portions of their CSR report. These efforts culminated in an assessment by the Australian Council of Superannuation Investors (ASCI) in 2016, designating the company at the "Leading" level for ESG reporters.

Following the June 2018 acquisition of Westfield, URW now owns and operates 102 shopping centers across 13 countries. With the establishment of long-term data integration and management solutions to track and analyze their global data sets, MetricsTrac provides a solid foundation for their future reporting, target-setting, and growth, and their continued sustainability efforts.

### CLIENT

Unibail-Rodamco-Westfield (URW)

### LOCATION

Century City, CA

### RESULTS & DELIVERABLES

- ▶ Increased CDP Climate Change disclosure score by two letter grades
- ▶ Defensible GHG inventory for global operations
- ▶ CSR report streamlined to comply with GRI Standards
- ▶ Reduced costs by one full-time equivalent for a period of six months
- ▶ Updated sustainability policies and benchmarks
- ▶ Successful management of third-party verification for CDP, GRESB, and GRI reporting

**20%**  
improvement  
on **FTSE4Good**  
disclosure score

**14-pt**  
increase  
on **GRESB**  
disclosure  
score



# DATA MANAGEMENT OUTSOURCING AND BUSINESS PROCESS MANAGEMENT

---

Data is key to connecting profitability and sustainability, as it provides you with the insights necessary to make informed business decisions.

ADEC ESG Solutions helps you make this connection by gathering, aggregating, standardizing, uploading, and managing data—providing expertise along the way to identify data gaps, and implementing process efficiencies to streamline the entire data collection and management process.

Building a solid sustainability strategy requires sound data collection and management throughout your operations

## Services include:

- ▶ Business process outsourcing (BPO)
- ▶ Data collection
- ▶ Data processing
- ▶ Data conversion and quality assurance
- ▶ Reporting and business intelligence
- ▶ Supply chain data capture

and value chain. ADEC Innovations fully integrates world-class expertise in back-office data processing with consulting and software to deliver comprehensive solutions that meet your unique needs.

Struggling with raw data stored across multiple facilities and in numerous digital and physical formats? Our Data Management Solutions enable seamless access to all your data and can support utility bill, incentive, and rebate processing. Free up valuable time and resources that allow you to focus on core strengths and strategic activities—and let us cost-effectively digitize and centralize your energy, environmental, social, and supply chain data.







# ADEC ESG SOLUTIONS FOR IMPACT ORGANIZATIONS

---

**We are dedicated to supporting coalitions, non-profits, and NGOs who work to make sustainability a priority worldwide.**

We create solutions that enable our impact organization partners to leverage our resources to achieve their objectives. From planning to system design and scale-up, ADEC Innovations understands and supports the unique and wide-ranging of needs of impact organizations and multi-stakeholder groups.

## **Program management**

- ▶ We provide overall program management capabilities to ensure your organization reaches its goals and objectives
- ▶ We coordinate across internal and external stakeholder groups to ensure that your program meets timelines and budgets

## **Technology design and development**

- ▶ ADEC Innovations tailors process and data management, disclosure, reporting, and benchmarking systems to your specific needs
- ▶ Community insights through open-data exchange and collaboration tools

## **Data collection, management, and support services**

- ▶ Our experienced team provides effective management of your processes through data collection, processing, analysis, and reporting—enabling your program to scale up to support thousands of participants
- ▶ With the highest level of quality assurance, ADEC Innovations ensures an unprecedented level of confidence in the results you achieve

## **Communications, marketing, and translation**

- ▶ ADEC Innovations helps foster community engagement and global participation through effective communications and support materials

## **Engagement and community management**

- ▶ We help you work with community managers to engage, onboard, and support participants across various programs and dimensions

## **Organizational planning, grants, and commercial strategy**

- ▶ We develop sustainable financial and commercial models for multi-stakeholder programs

## **Knowledge management and e-learning**

- ▶ With ADEC Innovations, you will utilize sophisticated, multi-lingual education and knowledge transfer modules



## CDP

As CDP's scoring partner from 2011-2020, ADEC Innovations' experienced team has scored over 23,000 responses.

For almost ten years, CDP and ADEC Innovations partnered to develop the processes and quality assurance checks necessary to ensure accuracy and consistency in applying CDP's scoring methodology across Climate Change, Water Scarcity, Forest Commodities, and Cities for Investor and Supply Chain respondents. Our experienced team provided responsive solutions to their needs as the program grew and evolved.



**23,000+**

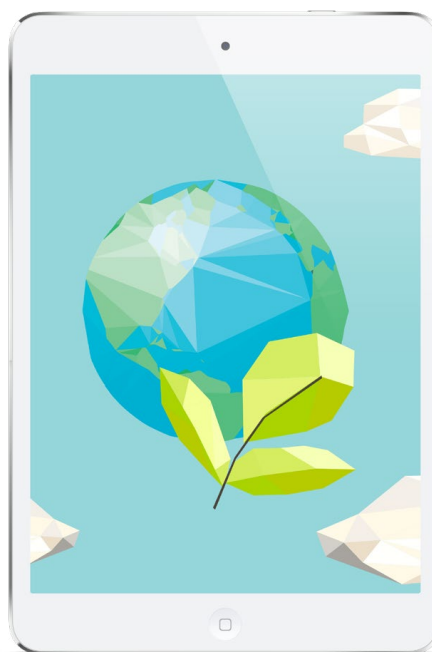
responses scored  
(by ADEC Innovations)

“ADEC Innovations' experience with business process outsourcing means the process runs smoothly, the CDP scoring methodology is consistently applied, and the team is very easy for us to work with. We continued to consolidate scoring around the world with ADEC Innovations because we have the confidence that it will be done on schedule and with high quality.

Esther Stoakes,  
Technical Officer — Scoring, CDP

ADEC Innovations supported CDP by providing services in:

- ▶ Business process management
- ▶ Data quality assurance
- ▶ Data analyses
- ▶ Client-specific performance scorecards and reviews
- ▶ Online scheduling tools
- ▶ Online product and services marketplace





## CDPINSIGHTS<sup>▲</sup>

AN ADEC INNOVATION

To support CDP respondents' understanding of their CDP scores and performance, ADEC Innovations created **CDPInsights™** to evaluate and benchmark CDP responses in a comprehensive, standardized way.

With the goal of providing a simple, efficient way to help organizations improve climate change strategies and programs in the short and long term, **CDPInsights** provided online analyses and reports and facilitates access to resources that support understanding and improvement of CDP performance.



**1,700 +**  
performance review  
calls completed



The ZDHC Gateway provides the ZDHC community with the tools and information needed to support better sourcing decisions.

“Creating this sort of system doesn't happen overnight, but it will be invaluable in providing clear, easily-accessible information on whether a chemical conforms with the ZDHC MRSL.

Frank Michel,  
Executive Director, ZDHC

By supporting alignment with the ZDHC MRSL and Wastewater Guidelines, the ZDHC Gateway helps guide corporations towards achieving zero discharge of hazardous chemicals throughout their value-chain. Currently, the ZDHC Gateway provides a **Chemical Module**, an advanced search engine for formulations that conform to the ZDHC MRSL, helping users find safer alternatives and driving substitution of hazardous chemicals. The **Wastewater Module** enables the textile and apparel industry to share verified wastewater test data, while a **Public Disclosure Portal** provides a global industry overview of conformance to the ZDHC Wastewater Guidelines.





## ZDHC FOUNDATION

In 2016, ADEC Innovations and the ZDHC Foundation formed a long-term strategic partnership that leveraged our technology and data management expertise to work towards the coalition's goal: eliminate the use of hazardous chemicals in the textile and apparel supply chain worldwide.

With the jointly designed ZDHC Gateway – Chemical and Wastewater Modules, ADEC Innovations combines our expertise in technology, data quality verification, and data processing in a web-based platform designed to improve industry-wide collaboration.

**To help further this initiative, we provide end-to-end, seamlessly integrated services to ZDHC in pursuit of its goals, including:**

- ▶ Program concept research, design, and development
- ▶ Financing plan and grant applications
- ▶ Standards development and publishing
- ▶ Stakeholder outreach, engagement, and onboarding
- ▶ User support desk and communications
- ▶ Data management, collection, and cleansing
- ▶ IT infrastructure and platform-as-a-service (PaaS)
- ▶ Program management
- ▶ Business intelligence
- ▶ Software application design and development
- ▶ Content development and language translations
- ▶ Marketing, PR, and communications
- ▶ Inside sales and enterprise sales
- ▶ Payment processing and transaction management
- ▶ Training and curriculum development

### Ø ZDHC

**3,300+**  
wastewater test  
reports generated



**3,200+**  
organizations  
collaborating





# SOFTWARE SOLUTIONS

## CLEANCHAIN<sup>™</sup>

AN ADEC INNOVATION

More and more companies are asked to provide visibility into their supply chains in a number of areas including management practices, human resources, emissions and discharges, chemical use, and many more.

CleanChain<sup>™</sup>, an ADEC Innovation, aligns with current processes and streamlines the tracking, managing, and reporting progress with different commitments, policies, and regulations across supply chains.

CleanChain is a solution for all companies within a supply chain – helping brands manage vast and oftentimes global supply chains and giving suppliers a simple and standardized way of managing operations and demonstrating best practices, safety, and sustainability.



### Benefits for Brands:

- ▶ Confidently monitor and demonstrate visibility into supplier business practices
- ▶ Demonstrate progress against internal and external commitments
- ▶ Improve and ensure compliance
- ▶ Reduce costs and burden of aggregating supply chain data
- ▶ Understand and reduce risks across your supply base
- ▶ Make more informed procurement decisions

### Benefits for Suppliers:

- ▶ Gain unprecedented insight into business operations
- ▶ Save time and costs managing data
- ▶ Maximize competitiveness
- ▶ Collaborate and maintain positive customer relationships
- ▶ Reduce the number of audits and tests
- ▶ Automate and ensure compliance across multiple client and industry standards, policies, and best practices





## CASE STUDY

---



### THE CHALLENGE

MAS Holdings (MAS), a leading manufacturer of intimate apparel, sports-, swim-, and performance wear struggled to reduce the use of hazardous chemicals in its manufacturing operations and supply chain for years. Handling such a large volume of information from disparate sources manually was labor-intensive and did not provide visibility to executives, customers, or facilities.

### OUR SOLUTION

With CleanChain's dynamic Product Library, MAS gained visibility into all chemical products used throughout its operations and supply chain. The system empowered MAS to improve its compliance by:

- ▶ Enabling the company to determine which formulations were acceptable for use
- ▶ Providing a simple way to compare products and check performance
- ▶ Decreasing the administrative burden of sifting through chemical information
- ▶ Allowing MAS to develop operational objectives to reduce its use of hazardous chemical products

CleanChain also facilitated data sharing between MAS and other stakeholders, increasing transparency. Since adopting CleanChain, MAS has realized significant advances in the efficiency, efficacy, and scope of ability to manage chemical information across its supply chain.

### CLIENT

MAS Capital (Pvt) Ltd.

### LOCATION

Colombo, Sri Lanka



CleanChain significantly reduces our manual burden and the associated costs of aggregating supply chain data, and provides us with exceptional transparency that helps us better understand and reduce risks across our operations and supply base.

**Suneth De Silva,**  
Assistant Manager -  
Chemical Sustainability,  
MAS Holdings

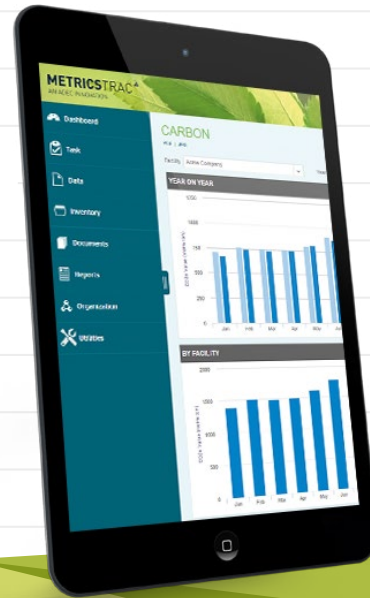




## METRICSTRAC<sup>TM</sup>

AN ADEC INNOVATION

Grappling with data dispersed across facilities, locations, and teams throughout an organization is no easy task, and investors and other stakeholders are calling for more transparency and accountability than ever.



Measuring social and environmental impacts has also become standard for organizations in every industry, and identifying, aggregating, and standardizing that information are complex and time-consuming.

MetricsTrac<sup>TM</sup>, an ADEC Innovation, enables you to monitor, manage, and report sustainability data in a way that is simple and cost-effective. Ready access to sustainability metrics allows for better decision-making and improved sustainability performance, management solutions, investor relations, and return on investment.

### With MetricsTrac:

- ▶ Collect scattered data from all divisions and departments, regardless of format
- ▶ Consolidate inconsistent data formats and fields into a uniform set
- ▶ Load existing databases directly into MetricsTrac
- ▶ Create tasks and accountability for hundreds of employees across multiple locations

### Benefits:

- ▶ Increase efficiency by better understanding your resource usage
- ▶ Eliminate the costs of maintaining a sustainability IT infrastructure
- ▶ Achieve an auditability trail
- ▶ Leverage industry expertise for a customized software solution and program management



## CASE STUDY

---

### NAVISTAR

#### THE CHALLENGE

Navistar, a leading manufacturer of commercial trucks, buses, defense vehicles, and engines, needed to put together a comprehensive annual inventory of its GHG emissions data to help better understand and manage its environmental footprint. Navistar was seeking software, business process outsourcing, and professional services to help automate the collection of GHG emissions data that stretched back nine years, with an ultimate objective of increasing the effectiveness of its energy and emissions management. As a highly dynamic company, Navistar needed an adaptive and automated solution.

#### OUR SOLUTION

Using MetricsTrac, ADEC Innovations guided Navistar in the development of historic GHG inventories and fully detailed custom reports for use in CDP submissions and other disclosure projects. ADEC Innovations also provided supporting services, including audit preparation, improvement reporting, and inventory evaluation. These products and services enabled Navistar to track changes in energy use and GHG emissions to better understand and manage its environmental footprint.

#### CLIENT

Navistar

#### LOCATION

Illinois, US



MetricsTrac is a fully functional system that is easy to use. In the past, onboarding of different systems took much more time and effort.

**Jack Shih, Chief Engineer,  
Environmental and Energy  
Affairs, Navistar**



## FOODCHAIN<sup>TM</sup>

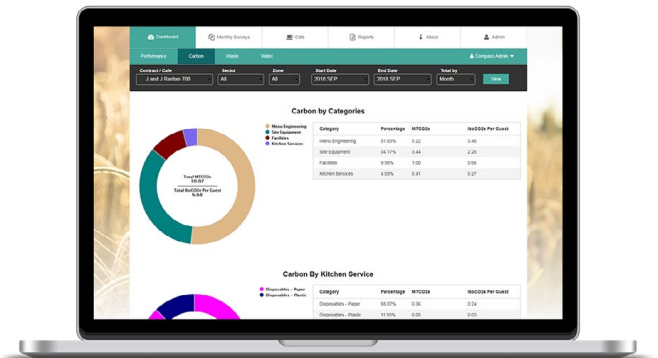
AN ADEC INNOVATION

Today's consumers are increasingly mindful of where their food comes from and how it is made.

From buy-local and farm-to-table movements to organic produce and cage-free eggs, public awareness surrounding the sustainability of food has never been greater or more widespread.

The hospitality and food service industry is unique and highly complex, so managing resource use and the impacts of food, service, and equipment across locations requires a unique solution.

FoodChain<sup>TM</sup>, an ADEC Innovation, is a unique strategic tool designed to help companies in the food services and hospitality industries minimize their carbon footprint, lower their environmental impact, and reduce operational costs. The robust and user-friendly platform allows food service operators calculate waste, water, and CO<sub>2</sub>e emissions, with the flexibility to track and monitor custom emissions.



### With FoodChain you will:

- **Show impact:** Demonstrate your commitment to sustainable practices to an increasingly discerning customer
- **Understand usage:** Track and reduce water and energy use of equipment and facilities
- **Manage emissions:** Calculate CO<sub>2</sub>e emissions across multiple facilities and down the supply chain
- **Cut back on waste:** Gain a comprehensive understanding of your resource wastage to lower their environmental impact
- **Set meaningful goals:** Benchmark sustainability metrics and measure your improvements
- **Empower your choices:** Make sound operational decisions with comprehensive sustainability goals in mind

### Benefits:

- Reduced energy, water, and food waste
- Lower operational costs and greater efficiency
- Increased consumer trust
- Greater stakeholder engagement





## CASE STUDY

---

### THE CHALLENGE

ADEC Innovations has collaborated with one of the world's leading food and support services companies, operating facilities in thousands of corporations, academic institutions, healthcare facilities, and cultural centers across North America. To uphold its global sustainability goals and commitment to sustainable food systems across nearly 10,000 facilities, the company requires an expansive yet highly adaptable data management system.

### OUR SOLUTION

The answer is FoodChain™, a unique, web-based tool that allows chefs and managers to understand and reduce their operations' carbon footprint by managing menu items and decreasing energy and water use, as well as waste disposal. FoodChain also allows managers to benchmark and measure the improvements made throughout the facility, the results of which are shareable for annual reports, sustainability indexes, and disclosure to public sustainability coalitions like CDP.

#### CLIENT

Leading Food and Support  
Services Company

#### LOCATION

Texas, US



Supported by [ADEC Innovations'] software, managers will now have the information they need to make the best choices for their business, their clients, and the environment.

**Vice President of  
Sustainability Initiatives –  
Food and Support  
Services Company**



## MARKETPLACE

ADEC ESG Solutions designed the Marketplace with customers in mind.

Whether you are looking for a way to preview our products or are an existing customer searching for the best product to complement your current service, the Marketplace, an ADEC Innovation, is a fast, efficient way to find your optimal solution.

### Ease of use

- ▶ Browse a wide range of ESG products and services
- ▶ Access the Marketplace through ADEC ESG Solutions software to quickly and seamlessly purchase software subscriptions, ESG consulting services, or CDP-related services<sup>2</sup>

### Purchase confidence

- ▶ Preview each product and service for a detailed, first-hand experience
- ▶ Utilize multiple payment options designed to support a diverse customer base

<sup>2</sup>Accepts wire, check, credit card, and PayPal payment options





# ENVIRObility

Open environmental data is scattered across disparate government agencies and organizations, which can make it difficult to achieve insights, consolidate critical risk datasets, and report outcomes in a comprehensive, user-friendly way.

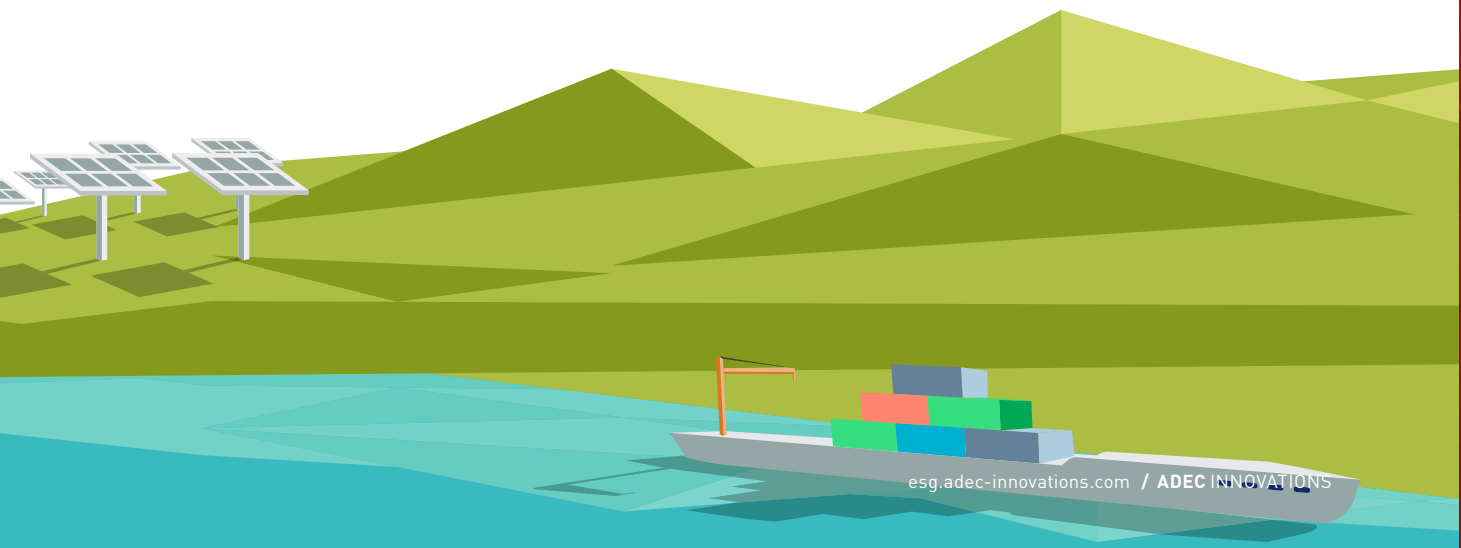
ADEC ESG Solutions, in partnership with Envirobity, an ADEC Innovation, has addressed these key challenges by creating Envirobity, an open environmental data platform that facilitates access to consolidated critical risk datasets and is accessible 24/7, readily available online, and easy for all users to digest. With access to more than 1,400 environmental databases, we provide up-to-date environmental risk data in a comprehensive, accurate, and

understandable format. Our reports provide a snapshot of environmental conditions and activities on a given parcel or within a given area, highlighting sites that pose an adverse environmental impact, and empowering you to make smart acquisition decisions.

Our team has been recognized for identifying threats to sustainable development, empowering cities, counties, special districts, and private industry to make smart acquisition decisions across:

- ▶ Environmental risk management
- ▶ Loan, investment, or insurance assessments
- ▶ Legal and environmental due diligence
- ▶ Transactional screening

Envirobity empowers businesses, organizations, and citizens to make more strategic and informed decisions and provides communities insights into the places in which people live, work, and play.







# OUR OFFICES

---

## UNITED KINGDOM

Unit 7, The Courtyard  
Furlong Road, Bourne End  
Buckinghamshire  
SL8 5AU

T +44 1628 369013

## FRANCE

128 rue la Boétie (lot 41)  
75008 Paris

T +44 1628 369013

## PORTUGAL

Rua Latino Coelho, N° 13, 3º piso  
1050 – 132 Lisboa

T +44 1628 369013

## CANADA

44 Byward Market Square  
Suite 250, Ottawa, ON K1N 7A2

T +1 613 244 1115

F +1 613 244 1116

## KENYA

ADEC Kenya Services EPZ Ltd.  
Nairobi

T +254 737 433 621

E [kenya@adec-innovations.com](mailto:kenya@adec-innovations.com)

## CHINA

Room 1204, 12th Floor  
359 Chengyi Street  
Jimei District  
Xiamen Software Park III  
Xiamen

T +86 592 217 7850 to 801

F +86 592 217 7851 to 801

E [xiamen@aplus-is.com](mailto:xiamen@aplus-is.com)

## MALAYSIA

15-7, Block A, Jaya ONE  
72A Jalan Universiti  
46200 Petaling Jaya  
Selangor

T +60 3 7490 2112

F +60 3 7960 6977

## SINGAPORE

20A Mosque Street  
059500

T +65 6535 3266

T +65 8343 0964

## PHILIPPINES

### MAKATI

26th Floor  
Philippine AXA Life Centre  
Sen. Gil Puyat Avenue  
Makati City, Metro Manila

T +63 2 8775 0632

## PHILIPPINES

### ALABANG

9th Floor  
Kingston Tower  
Acacia Avenue  
Madrigal Business Park, Alabang  
Muntinlupa City, Metro Manila

T +63 2 8775 0632

## AUSTRALIA

Unit 1, 1 Skyline Place  
Frenchs Forest NSW 2086

T +61 2 9418 7822

E [info@adec-innovations.com.au](mailto:info@adec-innovations.com.au)

## USA

T +1 888 826 5814

T +1 714 508 4100

F +1 714 508 4110

E [esginfo@adec-innovations.com](mailto:esginfo@adec-innovations.com)

250 Commerce, Suite 250  
Irvine, CA 92602

1350 Treat Boulevard, Suite 380  
Walnut Creek, CA 9459

56 Broome Corporate Parkway  
Conklin, NY 13748